

# Are you our next Electrical Graduate Engineer?



## Graduate Electrical Design Engineer

We have an exciting opportunity for a Graduate Electrical Engineer to join our firm.

This role is for a Graduate Electrical Design Engineer to train and work as an integral member within our existing team of low energy assessors, design technicians, and design engineers.

The applicant should hold an Electrical Engineering degree, or a similar Engineering degree with Electrical Engineering modules.

## What is Building Services Engineering?

CIBSE (The Chartered Institution of Building Services Engineers) describes Building Services Engineering as follows:

Building Services Engineering is all about making buildings meet the needs of people who live and work in them. Buildings must provide a safe and healthy environment in which people can live, work and achieve. Building Services Engineers are the people who make this happen.

They creatively apply scientific principles to design the buildings we need and to do so they focus on aspects of buildings such as Safety (lighting, ventilation, fire alarm systems etc.) Efficiency (energy consumption, communication networks etc.), Comfort (heating, drainage, air conditioning etc.).

## Chartered Institution of Building Services Engineers:

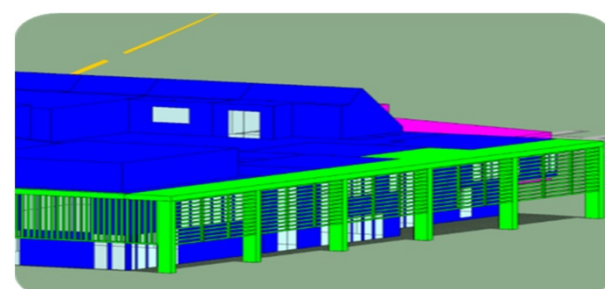


## Tackling Global Warming

Buildings and construction account for nearly 40% of energy-related carbon dioxide (CO2) emissions in the UK, whilst also having a significant impact on our natural habitats.

Building Services Consultants are one of the best placed professionals to develop the next generation of design and reduce this impact on the environment.

As a graduate at Vector Design, you will learn how to design energy efficient buildings and how to design systems so that they use less energy and have low or zero carbon emissions.



## Your Graduate Application Process

We've made applying for a Vector Design graduate position as simple as possible:

- ü Submit a copy of your CV with a covering letter outlining your suitability for the role
- ü Attend a remote, videocall interview via MS Teams or Zoom
- ü Final interview and have an opportunity to visit our offices
- ü Offer of employment!

If you are interested in the position we have available, please send us your CV along with a brief note outlining your interest in the role to:

E-mail: [info@vectordesign.co.uk](mailto:info@vectordesign.co.uk)

## Vector Design Consultancy

An innovative building services design and consultancy, we provide services in the fields of mechanical, electrical, and environmental design to all sectors of UK construction.



[www.vectordesign.co.uk](http://www.vectordesign.co.uk)

*Vector Design process personal data relating to those who apply for job vacancies with us or who send speculative job applications to us. We do this for employment purposes, to assist us in the selection of candidates for employment. We will not share any identifiable information about you with third parties without your consent unless the law requires us to do so.*

## Equal Opportunities Employer

Vector Design is an equal opportunities employer, and we comply fully with the Equality Act. All appointment selections are based on merit.

## The Opportunity

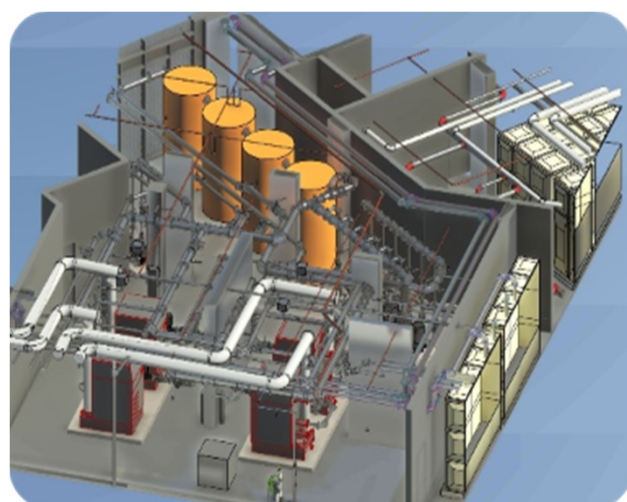
This position will give the successful candidate an opportunity to forge a career as a Building Services Design Engineer.

Our graduate engineers are provided in house training to develop their knowledge and establish a comprehensive understanding of:

- ü Energy efficient and low carbon design
- ü Power generation, and distribution systems
- ü Lighting, power, fire alarm, network, systems
- ü 3D drawing software
- ü Dynamic thermal and daylighting software

Our design engineers, including graduates, have access to an exceptional project portfolio, working with the UK's premier developers, project managers, and property owners to deliver designs for truly outstanding construction schemes.

Within Vector Design, graduate engineers have a mentored route through to Chartered Engineer status.



## Samples of our Outstanding Projects

Some examples of the outstanding projects that we have been involved with more new and exciting projects being added to our portfolio all the time:



Redevelopment of White City West London



Design of Outstanding Luxury Homes



Mixed use developments providing retail, commercial, residential space



Construction of W03, adjacent to Wembley Stadium



Construction of world's tallest modular residential building



Refurbishment of Oxford's finest historic buildings